

# MSC IN ENVIRONMENTAL SCIENCES AND HUMANITIES

# MSC IN ENVIRONMENTAL HUMANITIES AND ETHICS IN INTERDISCIPLINARY CONTEXTS

Warmly welcome!



# ENVIRONMENTAL SCIENCES AND HUMANITIES

- BSc students: **Infosession** next Friday, 19.09.25, 14:15, PER 14, 2.226
- MSc students: **Infosession and Workshop** next Friday, 19.09.25, 13:15, PER 14, 2.223

Kind invitation to our traditional

**Semester opening apéro**

From 15:00 – La Pommés, PER14, parterre

## SUSTAINABILITY IN PRACTICE

### RÉALISONS ENSEMBLE DES PROJETS CONCRETS!

- Nouvelle microcertification interdisciplinaire ouverte à tou-te-s les étudiant-e-s.

### LASS UNS ZUSAMMEN KONKRETE PROJEKTE VERWIRKLICHEN!

- Neue interdisziplinäre Mikro-Zertifizierung, für alle Studierenden zugänglich.

Info et inscription  
Info und Anmeldung



swissuniversities



Inscriptions  
ouvertes!  
Jetzt  
anmelden!

- Dès le semestre d'automne 2025, ouvert à tou-te-s les étudiant-e-s
- 2 semestres
- Pour acquérir des **compétences interdisciplinaires** en durabilité et en **gestion de projets durables**
- Pour développer des **projets concrets**, au service de la communauté académique et de la région
- **Certification** de 9ECTS reconnue dans le monde professionnel au niveau européen

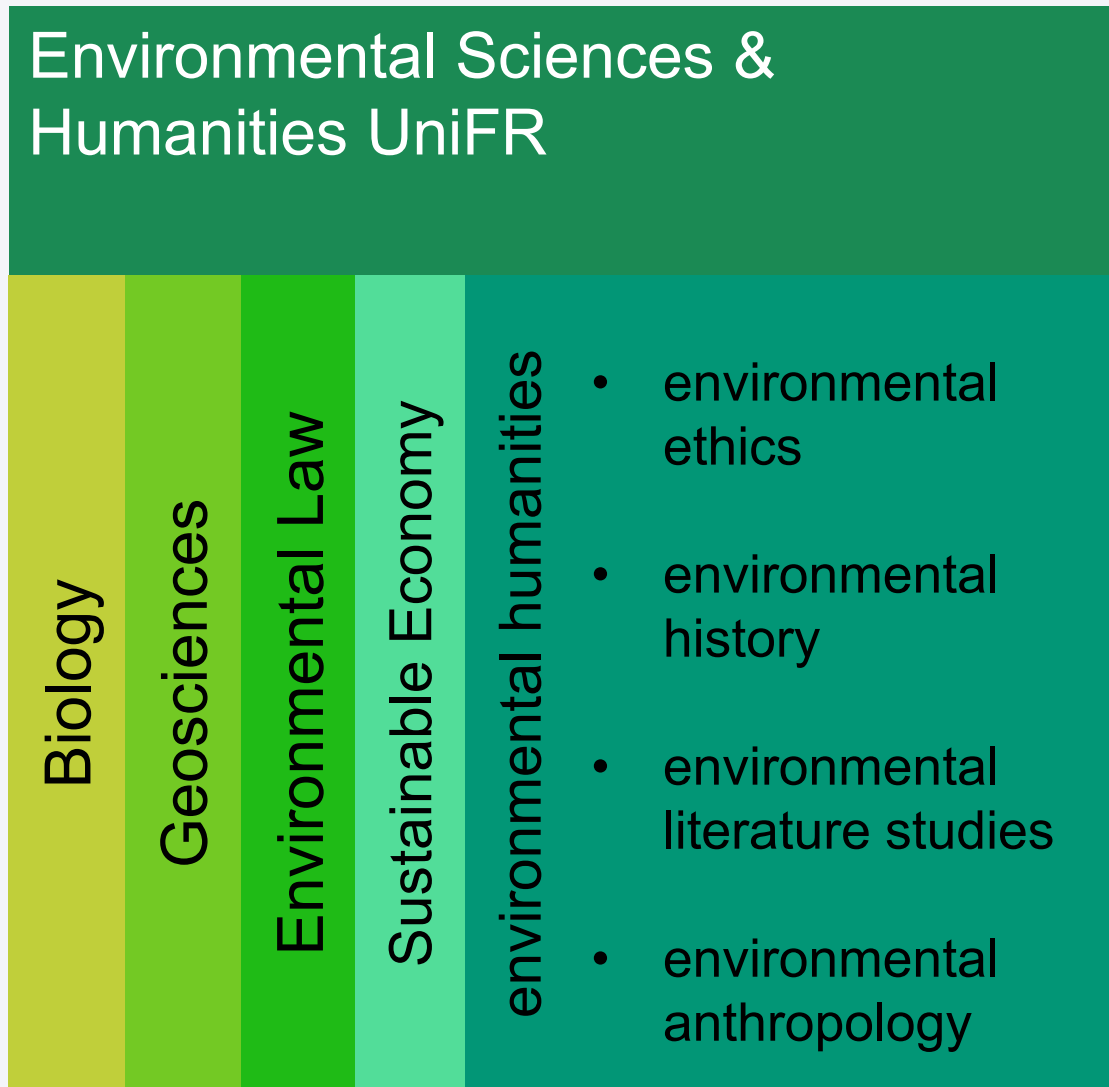
- Ab Herbst 2025, offen für alle Studierenden
- 2 Semester
- Um **interdisziplinäre Kompetenzen** in Nachhaltigkeit und **Projektmanagement** zu erwerben
- Um **konkrete Projekte** für die akademische Gemeinschaft und für die Region zu entwickeln.
- **Zertifizierung** mit 9 ECTS, auf dem Arbeitsmarkt europaweit anerkannt

# THEIR SOLUTION DEMANDS SCIENCE & HUMANITIES

- To solve the environmental challenges of today a solid background in **sciences** is essential. We focus on **biology and/or geosciences**.
- Governance solutions to environmental challenges include not only **legal and economic** aspects but also...
  - value judgements
  - ethical dilemmas
  - historical developments

*This demands competences in the **humanities** and especially in **ethics and ethical decision-making**.*

# ENVIRONMENTAL HUMANITIES



- environmental humanities
  - are **part of the** environmental sciences.
  - mostly originate from **classical** disciplines of **the humanities**.
  - a relatively **young subject**.
  - have an **environmental-ethical** character at UniFR.
- There is a lot of **room for** definition and **design for** the subject.

# PROSPECTS

## Competences

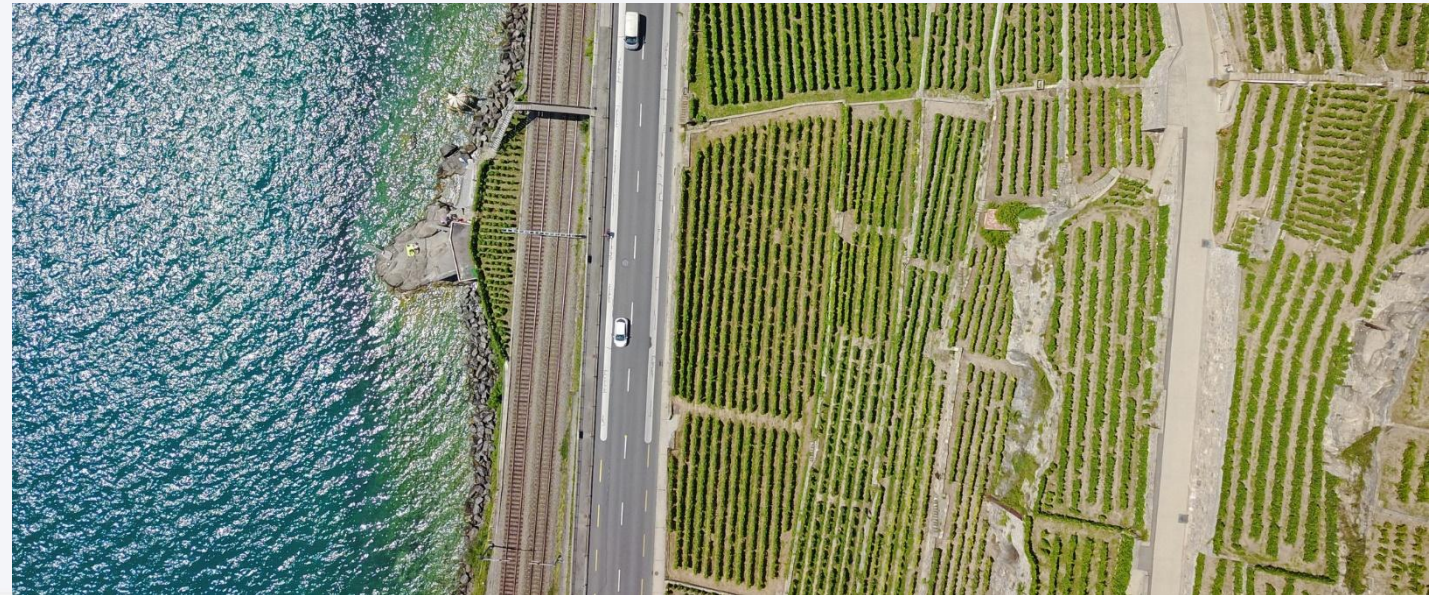
- analytical thinking & precise reasoning
- detecting the ethical / humanist implications of environmental practice
- general natural scientific, economic and legal knowledge concerning the environmental challenges of today
- specialize in the context of Master thesis

## Opportunities

- research in the fields of environmental sciences and humanities, especially applied ethics and philosophy
- Job opportunities include the fields of environmental administration, environmental education and public institutions as well as NGOs

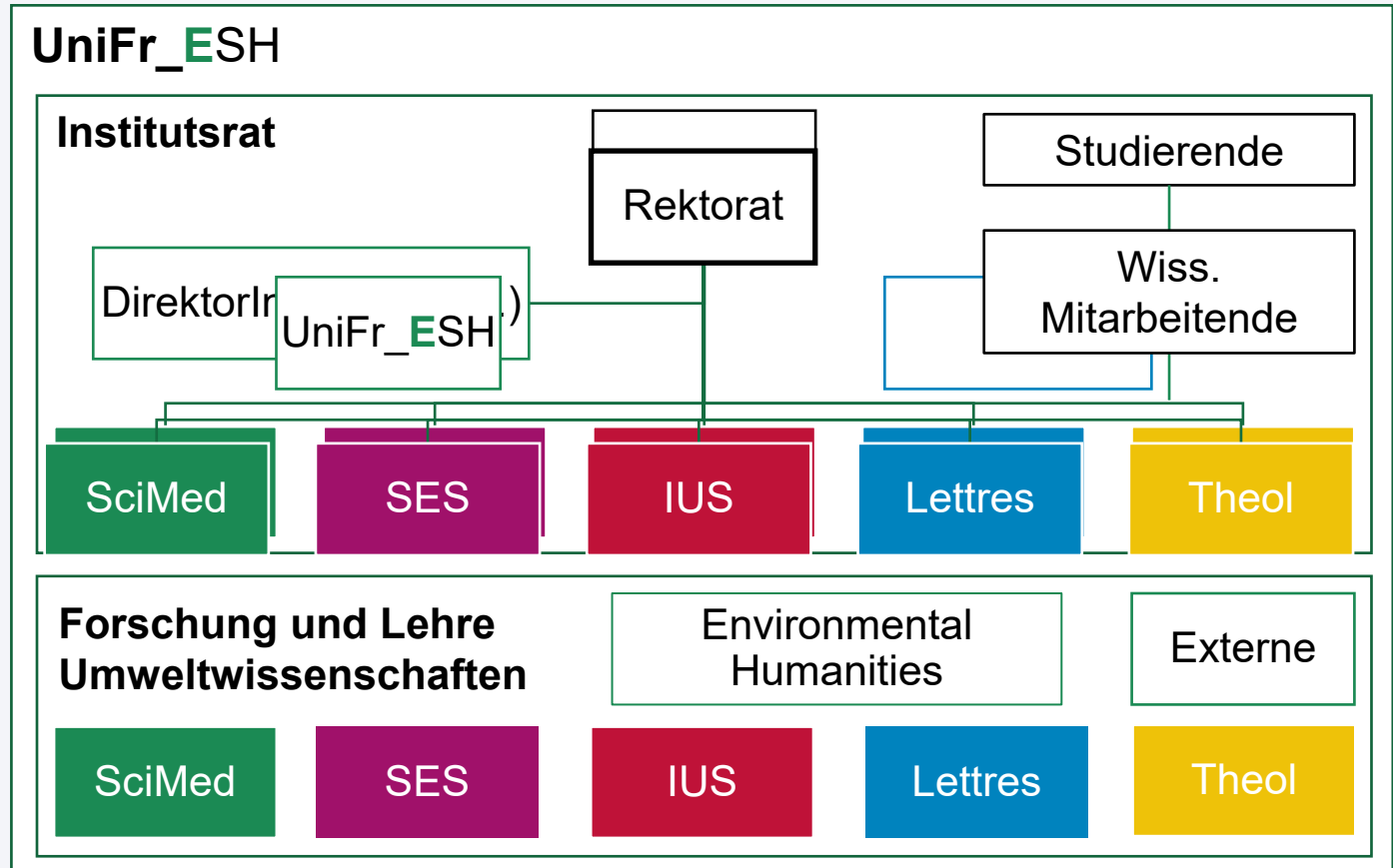
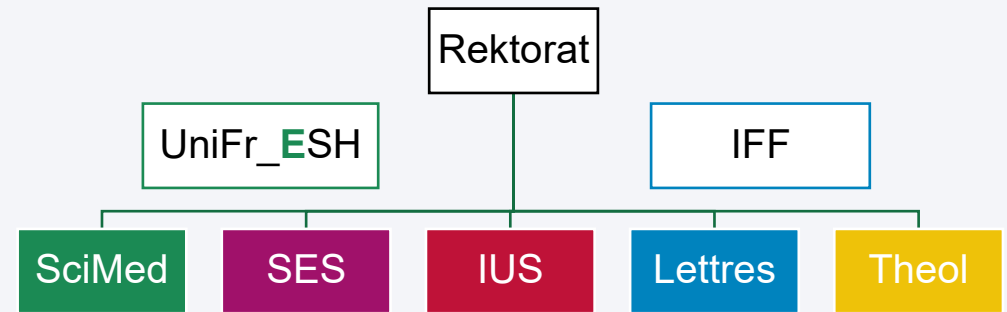


# WHO WE ARE & WHAT WE DO



# UNIVERSITY OF FRIBOURG ENVIRONMENTAL SCIENCES & HUMANITIES INSTITUTE

## UniFR\_ESH Institute





# TEAM UNIFR\_ESH INSTITUTE

## Teaching and scientific management

- Prof. Ivo Wallimann-Helmer (Director)
- **Dr. Angela Martin / Dr. Dominic Roser / PhD Gwendoline Bossert / Dr. Maude Ouellette-Dubé** (Assistants to teaching and research)
- Tristan Katz / Shea McBride / Simon Kräuchi / Gwendoline Bossert / Ilias Voiron (PhD students)
- Dr. Aurianne Stroude / Dr. Miriam Zemanova
- Lucie Monney, Rébecca Greber (Tutors)

## Administration and Student Advisory

- Astrid Kaiser



# RESEARCH PROFILE ENVIRONMENTAL HUMANITIES

Current research is oriented towards **questions of justice** and conceptual questions on the **differentiation of responsibilities** in dealing with environmental challenges.

- **Environmental justice in an interdisciplinary contexts:** fair differentiation of responsibilities for the implementation of environmental measures and distribution of environmental risks.
- **Institutions for a sustainable environmental policy:** institutional structures for ensuring a sustainable, efficient and effective environmental policy.
- **Ethical decision-making for environmental practice:** implementation of environmental and climate policy measures.

# ADMINISTRATION OF STUDIES



# STUDENT ADVISORY

- Please always check **our homepage** first: [www.unifr.ch/env](http://www.unifr.ch/env)
- **E-mail contact *only***: [environment@unifr.ch](mailto:environment@unifr.ch)

## Personal consultation

Astrid Kaiser, Room 3.325, PER14

Preferably on **Tuesdays from 1.30 to 4 p.m.** (by appointment)

## Consultation hours Prof. Wallimann-Helmer & Dr. Angela Martin

By appointment, please send your request by mail to:  
[environment@unifr.ch](mailto:environment@unifr.ch)

## Documents, information and important communications

- <https://moodle.unifr.ch/course/index.php?categoryid=37>
- If needed the code of the teaching unit is always set as the password (e.g. SSE.00230 for Principles of Environmental Ethics)
- Login is also possible with the account of the University of Bern (Switch AAI)

# COURSE ENROLLMENT

- On [my.unifr.ch](https://my.unifr.ch)
- Please note that each faculty has its **own registration deadlines.**
- Deadline (Faculty of Science and Medicine): **21.09.25** / 17.10.25 (late registration)

# EXAM REGISTRATION

- On [myunifr.ch](https://myunifr.ch)
- Please note that each faculty has its **own registration deadlines** ([Deadline](#)).
- Winter session (Faculty of Science and Medicine): **24.11.25 – 12.12.25**
- In some faculties, registration for the course includes registration for the examination.
- Note: No enrolment for exams in case of seminars validated by a written seminar paper (e.g. SSE.00470 Case studies in environmental sustainability)

# DECLARATIONS

- **Declaration on scientific integrity:** Every student attending a course at the Faculty of Science and Medicine must complete two online courses on documentation skills and scientific integrity and then sign and submit a scientific integrity form:

<https://www.unifr.ch/scimed/en/integrity>

- For women only: Please sign also the **Declaration concerning pregnancy and breastfeeding:**

<https://www3.unifr.ch/scimed/en/studies/rules/pregnancy>



# STRUCTURE OF THE PROGRAMMS



# GENERAL STRUCTURE AND RULES

- Each module consists of:
  - **Compulsory courses**
  - **Elective Courses**
- ***Elective courses*** should be taken at the level of competence: **only follow courses at master level if** you know the basics from your Bachelor studies.
- Some courses have strict **pre-requisites**

# STRUCTURE MSC ENVIRONMENTAL SCIENCES AND HUMANITIES

- The program divides into 6 Modules, supporting courses and the master thesis (2 years, 120 ECTS in total):

**1. Environmental Humanities and Ethics**

**2. Geosciences**

**3. Environmental Biology**

**4. Environmental Law**

**5. Sustainable Economy**

**6. Humanities and Theology**

**Supporting Courses & Master Thesis**

# MSC ENVIRONMENTAL HUMANITIES AND ETHICS IN CONTEXT

	Modules	ECTS
<b>Compulsory</b>	Environmental Humanities Module	24-27
	Master Thesis Module	30
		Total: 54-57
<b>Compulsory elective</b>	Geosciences Module	18
	Environmental Biology Module	18
		Total: 18-36
<b>Elective</b>	Sustainable Economics Module	15
	Environmental Law Module	18
		Total: 0-18
		Total: 90

# SUPPORTING COURSES MSC IN ENVIRONMENTAL SCIENCES & HUMANITIES

Workshop on supporting courses



# SUPPORTING COURSES AND MASTER THESIS

## Supporting Courses (9,5-11 ECTS)

- Choice of courses agreed with the study advisor to **compensate for competences** not acquired at Bachelor level

*Deadline: end of 4<sup>th</sup> week of the first semester*

## Master Thesis (30 ECTS)

- **Interdisciplinary analysis** of an environmental challenge with a focus on ethics.
- Regular **discussions and feedback** at the Environmental Humanities Colloquium.

# CHOICE OF COURSES AND SUPPORTING COURSES

- **Supporting courses** must be chosen from the lists of **elective courses**.
- Goal is to **acquire missing competences** from previous studies.
- **Rules of thumb:**
  - **Natural scientists** take courses in humanities, economics & law
  - **Economists and lawyers** take courses in natural sciences
  - **Social scientists** (e.g. international relations / political sciences) take courses in natural sciences & humanities
  - **Humanists** take courses in natural sciences

# SUPPORTING COURSES

- Procedure on Moodle:

<https://moodle.unifr.ch/course/view.php?id=248286>

- Please fill in form 1 until **end of 4<sup>th</sup> week of the *first semester*.**



# SUPPORTING COURSES

## S'inscrire à des cours

Semestre d'automne 2022

- You might need to register to the course under «additional teaching in...»
- At the end of the semester, once the credits are acquired : you have to transfert the credits in the supporting courses module !
- Go on your [www.myunifr.ch](http://www.myunifr.ch) page and ask for a «credit transfer»
- Select the course and select in which module the credits should be counted
- You will receive a confirmation in a few days

The screenshot shows a 'Filtres' (Filters) section with several categories and their corresponding options:

- Plan d'études \*: MSc en Sciences de l'environnement et humanités environnementales [M] ✓
- Semestre \*: MSc en Sciences de l'environnement et humanités environnementales [MA] 120
- Domaine d'études: Cours de langues, Projets d'auto-apprentissage, Enseignement complémentaire en Théologie, Enseignement complémentaire en Droit, Enseignement complémentaire en SES, Enseignement complémentaire en Lettres, Enseignement complémentaire en sciences
- Type de cours: (empty)
- Langue: (empty)
- Structure des études: (empty)
- Mode d'évaluation: Compétences numériques

A red arrow points from the text '«additional teaching in...»' in the list to the 'Enseignement complémentaire en Théologie' option in the dropdown menu.

### Examens / résultats

Examens

Résultats et validation

Transferts de crédits

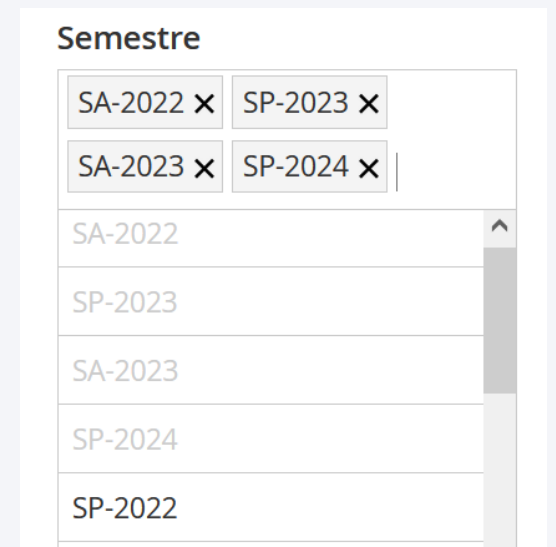
Remise de diplômes

# OTHER GENERAL INFORMATIONS

- The schedules of all courses are on [www.unifr.ch/timetable](http://www.unifr.ch/timetable)
- **A lot of courses are biennial / on announcement only !!!!**
  - If one course does not appear when you research it, do not forget to check if it appears the year after.

Same when you are interested in a course but want to take it the year after, do not forget **to check on *timetable*** if it is possible !

To check : select the appropriate semester on timetable



Semestre

SA-2022 x	SP-2023 x
SA-2023 x	SP-2024 x

SA-2022

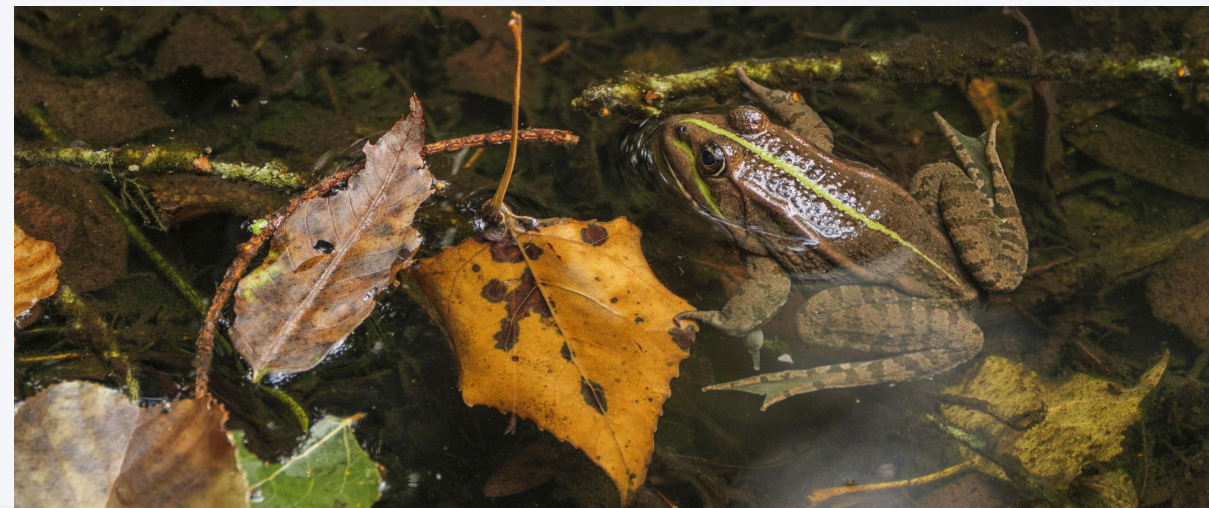
SP-2023

SA-2023

SP-2024

SP-2022

# CONCLUSION



## SUSTAINABILITY IN PRACTICE

### RÉALISONS ENSEMBLE DES PROJETS CONCRETS!

- Nouvelle microcertification interdisciplinaire ouverte à tou-te-s les étudiant-e-s.

### LASS UNS ZUSAMMEN KONKRETE PROJEKTE VERWIRKLICHEN!

- Neue interdisziplinäre Mikro-Zertifizierung, für alle Studierenden zugänglich.

Info et inscription  
Info und Anmeldung



swissuniversities



Inscriptions  
ouvertes!  
Jetzt  
anmelden!

- Dès le semestre d'automne 2025, ouvert à tou-te-s les étudiant-e-s
- 2 semestres
- Pour acquérir des **compétences interdisciplinaires** en durabilité et en **gestion de projets durables**
- Pour développer des **projets concrets**, au service de la communauté académique et de la région
- **Certification** de 9ECTS reconnue dans le monde professionnel au niveau européen

- Ab Herbst 2025, offen für alle Studierenden
- 2 Semester
- Um **interdisziplinäre Kompetenzen** in Nachhaltigkeit und **Projektmanagement** zu erwerben
- Um **konkrete Projekte** für die akademische Gemeinschaft und für die Region zu entwickeln.
- **Zertifizierung** mit 9 ECTS, auf dem Arbeitsmarkt europaweit anerkannt



# FACHSCHAFT DES GÉOSCIENCES FACHSCHAFT DER GEOWISSENSCHAFTEN



FSGEOSCIENCESUNIFR



# ACTIVITÉS?

- Apéro de bienvenue
- GeoFondue
- Apéro de Noël
- Soirée film
- Week-end Cryosphère
- Excursions



Fachschaft des Géosciences



# WHATSAPP- GROUP ENVIRONMENTAL SCIENCES AND HUMANITIES





Kind invitation to our traditional

## Semester opening apéro

From 15:00 – La Pommés, PER14, parterre